

# LSSCB-S12

## 1200mm Single Centre Universal Laboratory Sink

316  
SS

1.2  
mm

L/R

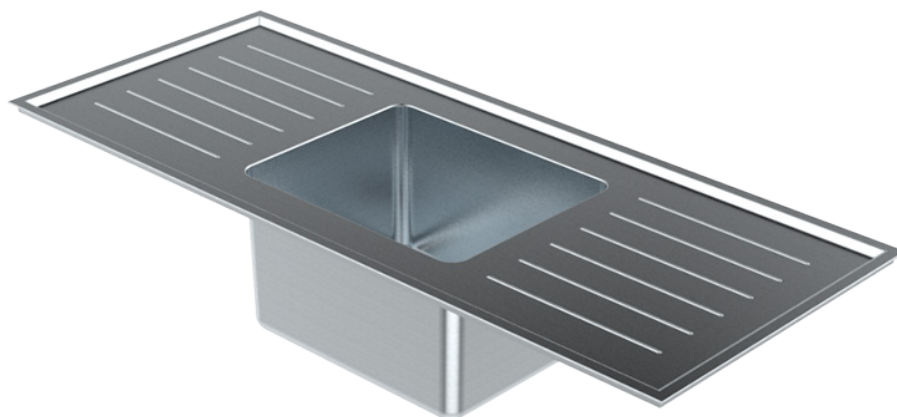
Acid  
Resistant

### About

Stainless Express Stainless Steel Single Centre Bowl Universal Lab Sinks are fabricated using 1.2mm grade 316 acid resistant stainless steel. Incorporating a uniquely Stainless Express innovation, the Universal Sink Range possess 70mm hobs on either side of the bowl for easy installation. They are supplied with 60mm spaced corrugated drainer and optional WaterMark certified grade 316 stainless steel waste outlet (LSPW). The Integrated single bowl is L 400 x W320 x D250 and radiused internal bowl corners ensure cleaning is easy. Tap holes can be supplied to suit specified tapware. Ideal for school science rooms and laboratories.

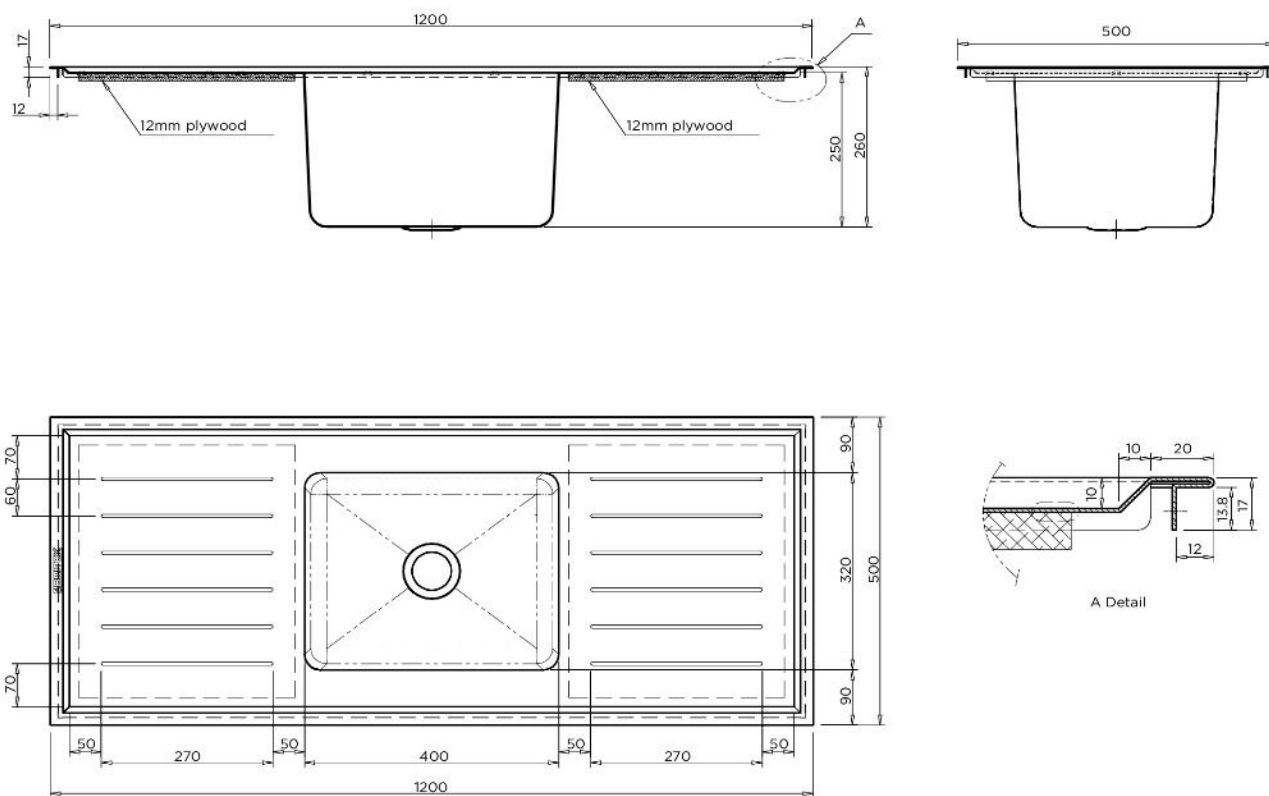
### Features

- Standard Stocked Sizes
- Universal - for easy installation
- Single centre bowl, double drainer
- Optional WaterMark certified S.S. waste
- Will not crack or chip
- Corrugated drainer
- Radius internal bowl corners
- Grade 316 acid resistant S.S.
- 50mm centre waste
- Optional: Select from our range of Laboratory Tapware
- Optional Tap Holes to suit specified tapware
- 70mm hob to incorporate tapware
- Suits school science rooms and laboratories



# LSSCB-S12

## 1200mm Single Centre Universal Laboratory Sink

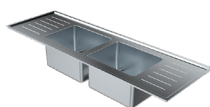


### Other Sizes

#### LSSCB-S15

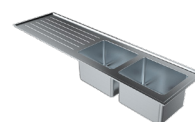
1500mm Single Centre  
Universal Laboratory Sink

### Also Available



#### LSTCB-S15

1500mm Twin Centre  
Universal Laboratory  
Sink



#### LSTEB-S18

1800mm Twin End  
Universal Laboratory  
Sink