

# LSTCB-S15

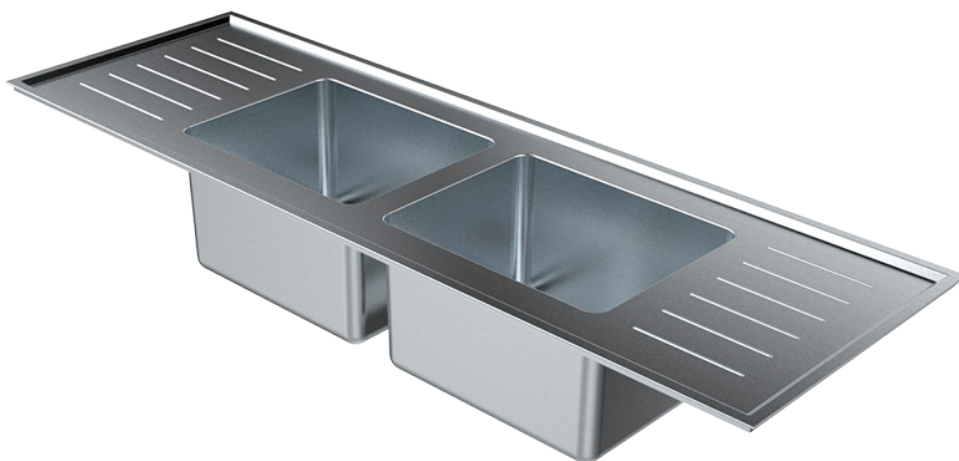
## 1500mm Twin Centre Universal Laboratory Sink

316  
SS

1.2  
mm

L/R

Acid  
Resistant



### About

Stainless Express Stainless Steel Twin Centre Bowl Universal Lab Sinks are fabricated using 1.2mm grade 316 acid resistant stainless steel. Incorporating a uniquely Stainless Express innovation, the Universal Sink Range possess 70mm hobs on either side of the bowl for easy installation. They are supplied with 60mm spaced corrugated drainer and optional WaterMark certified grade 316 stainless steel waste outlet (LSPW). The Integrated single bowl is L 400 x W320 x D250 and radiused internal bowl corners ensure cleaning is easy. Tap holes can be supplied to suit specified tapware. Ideal for school science rooms and laboratories.

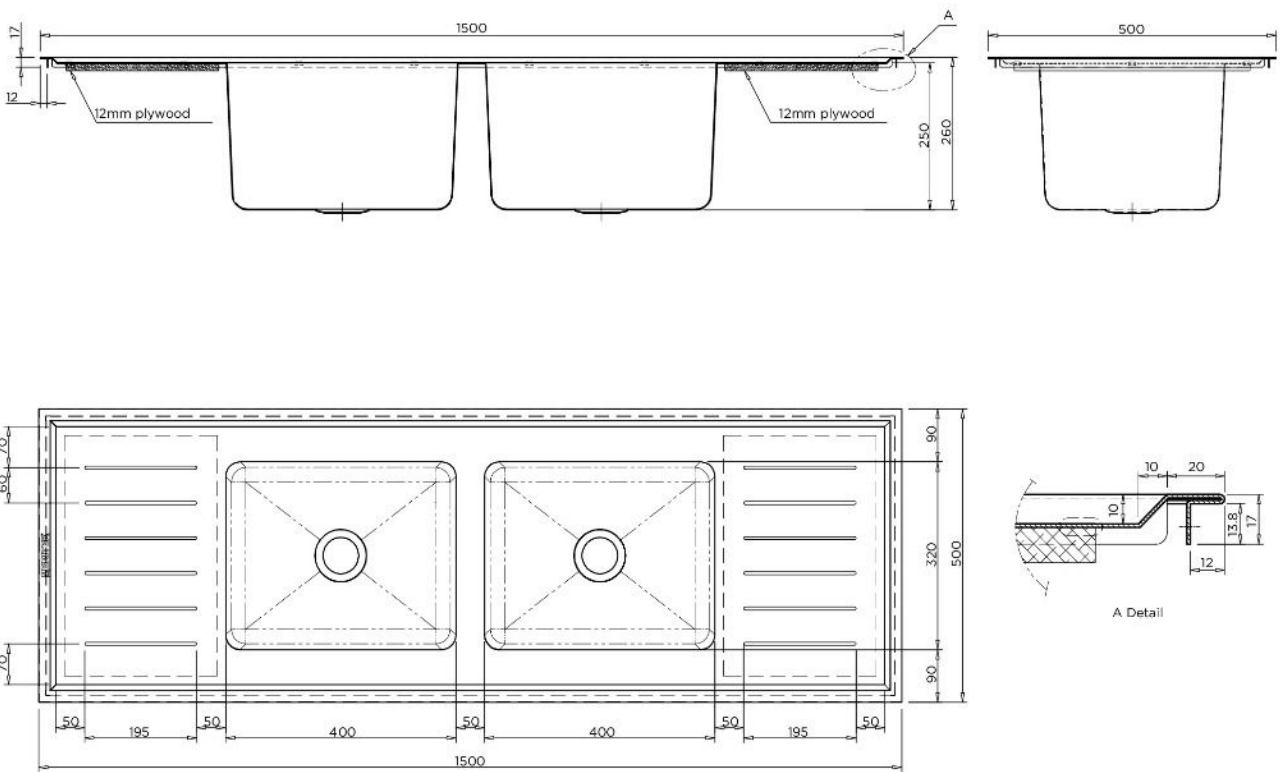
### Features

- Standard Stocked Sizes
- Universal - for easy installation
- Twin centre bowls, double drainer
- Optional WaterMark certified S.S. waste
- Will not crack or chip
- Corrugated drainers
- Radius internal bowl corners
- Grade 316 acid resistant S.S.
- 50mm centre waste
- Optional: Select from our range of Laboratory Tapware
- Optional Tap Holes to suit specified tapware
- 70mm hob to incorporate tapware
- Suits school science rooms and laboratories

# LSTCB-S15

## 1500mm Twin Centre Universal Laboratory Sink

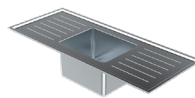
Commercial Sinks



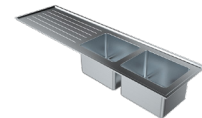
### Other Sizes

**LSTCB-S18**  
1800mm Twin Centre  
Universal Laboratory Sink

### Also Available



**LSSCB-S12**  
1200mm Single Centre  
Universal Laboratory  
Sink



**LSTEB-S18**  
1800mm Twin End  
Universal Laboratory  
Sink